

But-2-ene-1,4-diamine and But-2-ene-1,4-diol as Donors for Thermodynamically Favored Transaminase and Alcohol Dehydrogenase-Catalyzed Processes

Lía Martínez-Montero,^a Vicente Gotor,^a Vicente Gotor-Fernández,^{a,*} and Iván Lavandera^{a,*}

^a Departamento de Química Orgánica e Inorgánica, Instituto Universitario de Biotecnología de Asturias, University of Oviedo, C/Julián Clavería 8, 33006 Oviedo, Spain
Fax: (+34) 985 103446; phone: (+34) 985 103454 (V.G.-F.) and (+34) 985 103452 (I.L.); e-mail: vicgotfer@uniovi.es (V.G.-F.) and lavanderaivan@uniovi.es (I.L.)

Received: ((will be filled in by the editorial staff))



Supporting information for this article is available on the WWW under <http://dx.doi.org/10.1002/adsc.201#####>.

Abstract. *cis*- and *trans*-But-2-ene-1,4-diamine have been prepared and efficiently applied as sacrificial cosubstrates in enzymatic transamination reactions. The best results were obtained with the *cis*-diamine. The thermodynamic equilibrium of the stereoselective transamination process is shifted to the amine formation due to tautomerization of 5*H*-pyrrole into 1*H*-pyrrole, achieving high conversions (78-99%) and enantiomeric excess (up to >99%) by using a small excess of the amine donor. Furthermore, when the reaction proceeded, a strong coloration was observed due to polymerization of 1*H*-pyrrole.

A structurally related compound, *cis*-but-2-ene-1,4-diol, has been utilized as cosubstrate in different alcohol dehydrogenase (ADH)-mediated bioreductions. In this case high conversions (91-99%) were observed due to a lactonization process. Both strategies are convenient from both synthetic and atom economy points of view in the production of valuable optically active products.

Keywords: Alcohol dehydrogenases; atom economy; biocatalysis; cofactor recycling; transaminases

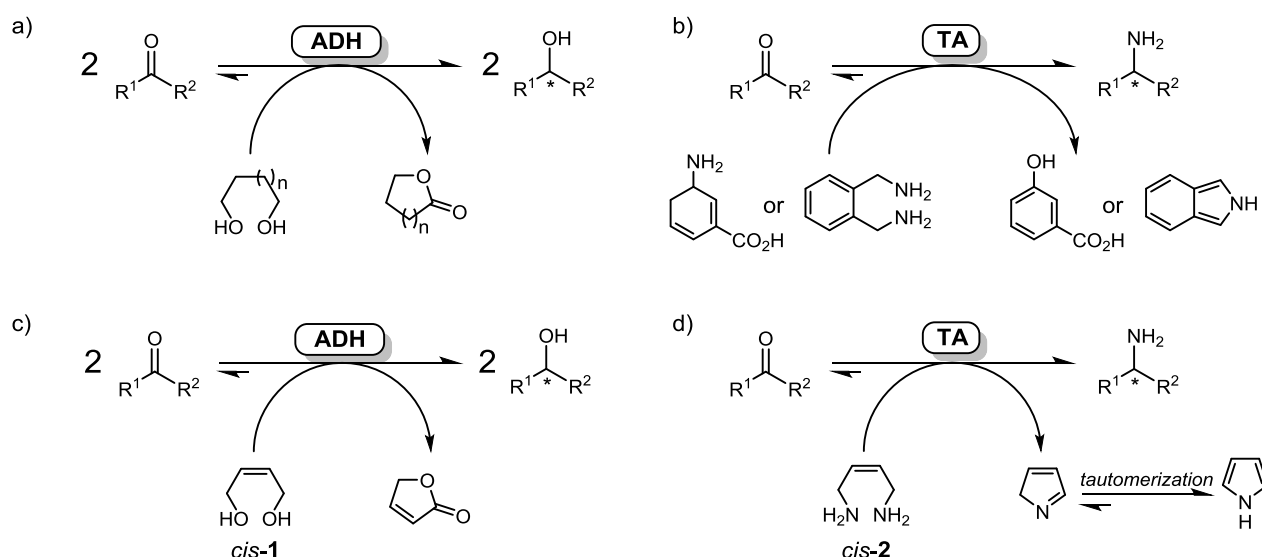
Introduction

Transaminase (TA)- and alcohol dehydrogenase (ADH)-catalyzed transformations are prominent biocatalytic examples at academic and industrial levels to obtain enantiopure target molecules.^[1] Both biocatalyst types can act over carbonylic compounds to accomplish desymmetrization processes (ideally in quantitative yield and selectivity), affording (chiral) amines^[2] and alcohols,^[3] respectively. Their mechanisms are different, but they have as common feature the necessity of a second molecule (cofactor) to accomplish these transformations.^[4] These coenzymes, nicotinamide [NAD(P)H] for ADHs and pyridoxal 5'-phosphate (PLP) for TAs, must be usually employed in catalytic amounts due to their high costs and inhibition issues. To afford this, excellent cofactor recycling strategies that can overcome the use of stoichiometric quantities of the coenzyme together with a driving of the thermodynamic equilibrium of the process have been described.^[5]

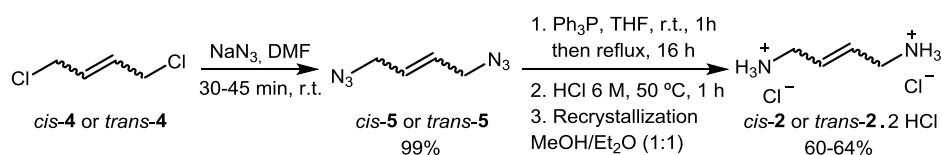
For ADHs, among the different existing methodologies, the use of a cheap sacrificial alcohol such as 2-propanol has been commonly described in a 'coupled-substrate' approach, generally obtaining excellent results.^[6] For TAs, a similar methodology

can be successfully applied using an auxiliary amine donor such as isopropylamine.^[7] Unfortunately, these cosubstrates must be utilized in a huge molar excess regarding the carbonylic compound to adequately force the reaction into the reduced derivatives. This obviously leads to a poorer atom economy of the process.

Recently, the application of cosubstrates that can greatly reduce the equivalents utilized in biocatalyzed transformations mediated by ADHs and TAs, is gaining more relevance. Hence, the use of diols such as 1,4-butanediol^[8] or 1,6-hexanediol^[9] has allowed 'substrate-coupled' redox processes in close to stoichiometric relation regarding the target substrate. This is due to the thermodynamically favored ring closure of the ω -hydroxyaldehyde intermediate, thus forming the corresponding hemiacetal, which in a subsequent oxidative step renders the final lactone co-product (Scheme 1a). On the other hand, a cyclic amine^[10] or a diamine^[11] have been described as amine donors that can highly displace the equilibria in TA-catalyzed protocols due to ring aromatization (Scheme 1b). However, the high cost of these tailored amines and difficulties on separating the excess of the donors from the products make interesting the study of other alternatives.



Scheme 1. Strategies to drive the thermodynamic equilibria in ‘coupled-substrate’ approaches: a) ADH-catalyzed reductions *via* lactonization; b) TA-catalyzed aminations *via* aromatization; c) and d) ADH- and TA-catalyzed processes using *cis*-1,4-but-2-ene-1,4-diol and *cis*-1,4-but-2-ene-1,4-diamine, respectively (this study).



Scheme 2. Synthetic pathway to obtain diamines *cis*-2 and *trans*-2.

Herein we have studied the application of two related compounds, *cis*-but-2-ene-1,4-diol (*cis*-1) and *cis*-but-2-ene-1,4-diamine (*cis*-2), as cosubstrates in ADH- and TA-mediated transformations, respectively (Schemes 1c and 1d). Thus, after optimization of the reaction conditions, we demonstrate that these derivatives can be employed at much lower extent than conventional cosubstrates to obtain enantioenriched alcohol and amine products through enzyme-catalyzed reactions, with high purity after a simple extraction.

Based on previously described protocols that make use of designed cosubstrates to favor TA-mediated processes,^[10,11] we envisaged that simple 1,4-diamines could be used for this purpose. Once the ω -aminoaldehyde intermediates were formed, they could intramolecularly cyclize, thus providing the driving force that could transform quantitatively the carbonylic compound of interest. With this in mind, diamines *cis*-2 and 1,4-butanodiamine **3** were envisioned as perfect candidates. Moreover, in the case of *cis*-2, after cyclization to 5*H*-pyrrole, it could tautomerize into 1*H*-pyrrole (Scheme 1d).

Results and Discussion

While diamine **3** is commercially available, we synthesized *cis*-2. As a first approach, we used diol

cis-1 as starting material.^[12] Different conditions such as Mitsunobu reaction or alcohol activation through *O*-tosylation were tried, but unfortunately these protocols did not work out. Hence, we employed a slightly modified method proposed by Delcros and co-workers,^[13] starting from commercially accessible *cis*-1,4-dichlorobut-2-ene (*cis*-4, Scheme 2). In a first step both halogen atoms were substituted by azides using a typical nucleophilic substitution protocol, and in a second step the reduction of diazido compound *cis*-5 was carried out under Staudinger conditions with triphenylphosphine, followed by acidic hydrolysis affording *cis*-2 as dichlorohydrate salt. During this synthetic pathway an alkene isomerization into the *trans*-diamine (*trans*-2) was observed, therefore recrystallization in a methanol/diethyl ether (1:1) mixture was performed, providing the desired compound with high *cis/trans* selectivity (approx. 95:5). To check the effect of the double bond stereochemistry, diamine *trans*-2 was also synthesized following the same reaction route (Scheme 2).

In a first set of experiments, three different ketones (**6-8a**, see Table 1) were used as suitable substrates with two commercially available transaminases (Figure 1). Thus, a small excess of the amine donor (1.5 equivalents) was applied. Gladly, TAs could accept diamine *cis*-2 as donor, affording the corresponding amines **6-8b** with high to excellent

conversions after 48 h at 30 °C. Although in a minor extent, *trans*-**2** could also provide moderate to high conversions, while saturated diamine **3** appeared as a poor substrate for these enzymes. These results remark the relevance of the presence and stereochemistry of the double bond in the structure of the diamine, which is the key to provide the ring aromatization.

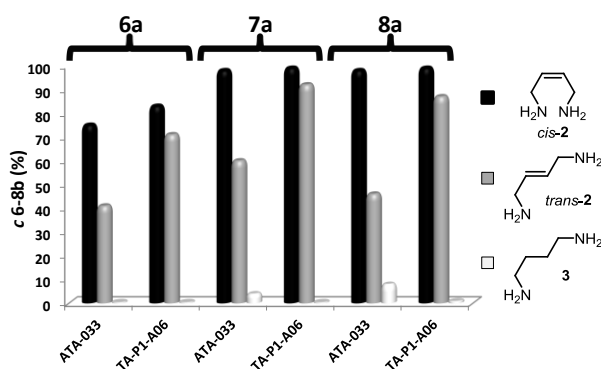
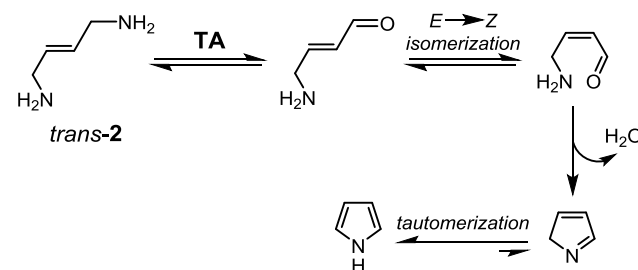


Figure 1. Effect of the amine donor in TA-catalyzed reactions using 1.5 equiv. of *cis*-**2**, *trans*-**2**, and **3**.

Interestingly, when the reaction proceeded with *cis*-**2** and *trans*-**2**, it was observed the formation of black colored precipitates. This can be ascribed to the polymerization of the pyrrole by-product resulting in the formation of polypyrrole.^[14] In fact, when we incubated pyrrole in the reaction medium in the absence of enzyme and PLP, we did not observe coloration, but when we accomplished the same experiment just adding PLP, a quick formation of the black polymers was detected. It seems that PLP mediates the polymerization of pyrrole acting as an acidic catalyst. This phenomena is also in agreement with the previously described by Turner and co-workers,^[11] where the isoindole co-product (Scheme 1b) polymerized under similar conditions affording intense colored derivatives. As in their case, this observation can potentially lead to a sensitive and operationally simple colorimetric assay to identify TA activity.^[11,15]

The formation of pyrrole was also demonstrated by NMR experiments performing the enzymatic reactions in deuterium oxide (see SI for more details). Surprisingly, when we studied the transformation using *trans*-**2** as amine donor, it was also observed the presence of pyrrole in the reaction crude. This fact can explain why in the presence of this diamine the aspect of the medium was similar. If pyrrole is formed, at some point there must be a *cis/trans* isomerization of the double bond, otherwise cyclization would not be possible. When we incubated *trans*-**2** in the reaction medium without any ketone substrate, isomerization was not observed. Therefore, we speculate that the *trans*- ω -aminoaldehyde intermediate formed after deamination of *trans*-**2** must be the species which

undergoes this process (Scheme 3). This is not surprising as it has been described that similar α,β -unsaturated aldehydes can isomerize in the presence of pyridine derivatives, which can achieve a reversible 1,4-addition.^[16] In our case PLP could act as the isomerization agent.



Scheme 3. Transformation of diamine *trans*-**2** into pyrrole through the isomerization of the *trans*- ω -aminoaldehyde intermediate.

Table 1. Amination of ketones **6-19a** using *cis*-**2** (3 equiv.) as amine donor.^[a]

6a, R= 2-F
7a, R= 2-Cl
8a, R= 2-Br
9a, R= 2,6-diF
10a, R= 3-Br
11a, R= 2-Me

12a
13a
14a, R= H
15a, R= 4-F

16a
17a
18a
19a

Entry	Ketone	Enzyme	<i>c</i> [%] ^[b]	<i>ee</i> [%] ^[c]
1	6a	ATA-033	96	>99 (<i>R</i>)
2	6a	TA-P1-G06	97	>99 (<i>S</i>)
3	7a	ATA-033	98	>99 (<i>R</i>)
4	7a	TA-P1-G06	99	>99 (<i>S</i>)
5	8a	ATA-025	99	>99 (<i>R</i>)
6	8a	TA-P1-A06	99	>99 (<i>S</i>)
7	9a	ATA-012	96	>99 (<i>R</i>)
8	10a	ATA-033	79	>99 (<i>R</i>)
9	11a	ATA-024	82	>99 (<i>R</i>)
10	12a	ATA-025	93	>99 (<i>R</i>)
11	12a	TA-P1-A06	93	99 (<i>R</i>)
12	13a	ATA-033	98	>99 (<i>R</i>)
13	14a	TA-P1-A06	78	>99 (<i>S</i>)
14	15a	TA-P1-A06	99	92 (<i>S</i>)
15	16a	TA-P1-A06	92	95 (<i>S</i>)
16	17a	ATA-113	80	82 (<i>S</i>)
17	18a	TA-P1-A06	82	88 (<i>S</i>)
18	19a	ATA-256	89	26 (<i>S</i>)

^[a] For reaction conditions, see SI.

^[b] Measured by GC analysis.

^[c] Measured by chiral GC or HPLC analysis.

Subsequently, *cis-2* was applied as amine donor in phosphate buffer and in the presence (2.5% v/v) of dimethylsulfoxide (DMSO) as solubilizing agent with ketones **6-19a** (Table 1). This selection was made based on a previous study performed in our group^[17] due to the relevance of the obtained amines as precursors of interesting derivatives.^[18] Aromatic (entries 1 to 9), heteroaromatic (entries 10 to 12), and aliphatic substrates (entries 13 and 17) could be transformed into the corresponding enantioenriched amines with excellent conversions and enantiomeric excess. Interestingly, TAs with opposite stereopreference can work under these conditions, therefore providing both antipodes for some of the selected examples. ATA-025 and ATA-033 showed the best results in terms of *R*-selectivity, and TA-P1-A06 and TA-P1-G06 were in general the best candidates to obtain the *S*-enantiomers. We also carried out a study on a cyclic ketone such as 1-indanone (**19a**, see SI). We were pleased to observe that meanwhile 1-indanone was slightly converted for most of the enzymes tested using isopropylamine as amino donor, in some cases conversions dramatically increased using *cis-2* to afford the corresponding amine with modest enantiomeric excess (entry 18).

It has been previously described that similar cosubstrates can also favor these processes from a kinetic point of view regarding conventional donors.^[8c] In this case, initial rates of TA-catalyzed reactions using isopropylamine, *cis-2*, and *trans-2* were measured. We found that isopropylamine reacted faster than both diamines (especially than the *trans* isomer), leading to the highest initial rate (see SI). This fact shows that these transformations are mainly thermodynamically (but not kinetically) driven.

The use of this diamine is particularly advantageous, since after a simple extraction protocol is possible to obtain the desired amines with high purity, as diamine *cis-2* is completely soluble in water and the excess of this compound remains on the aqueous phase even after extraction under basic conditions. Moreover, polymers coming from pyrrole can be easily removed in this case by centrifugation.

As a proof, we applied this transformation concept on a preparative scale. Thus, 100 mg of ketones **7a** and **8a** were transformed into the corresponding (*R*)-amines (>99% *ee*) using ATA-033 and *cis-2* (1.5 equiv.) in 74-83% yield after 48 h of reaction. Finally, we have compared the conventional methodology using an excess of isopropylamine, with thermodynamically favored strategies employed for TA-catalyzed reactions, calculating the theoretical value of waste generated according to the reaction equation.^[19] To perform this, we have used the EATOS program,^[20] assuming a cosubstrate molar excess as described by the corresponding authors,^[10,11] and a quantitative conversion of a model ketone (**6a**, Table 2). As can be seen, our methodology (entry 4) was perfectly comparable to similar previously described strategies (entries 2 and 3), while greatly improving the standard conditions

using isopropylamine (entry 1). The method presented here upgrades the previous ones as the co-product obtained (pyrrole), displays a substantially lower molecular weight.

Table 2. Quantity of waste generated *per* kg of amine (**6b**) synthesized depending on the amine donor.^[a]

Entry	Amine donor	Molar excess ^[b]	Waste (kg kg ⁻¹ product)
1	IPA ^[c]	40	17
2	Cyclic amine ^[d]	1.05	1.04
3	Diamine ^[e]	1.1	1.07
4	<i>cis-2</i>	1.5	0.92

^[a] Calculated using the EATOS program. Quantitative conversion was assumed.

^[b] Regarding the ketone substrate.

^[c] Isopropylamine.

^[d] Amine donor described by Berglund and co-workers (see Scheme 1b).^[10]

^[e] Amine donor described by Turner and co-workers (see Scheme 1b).^[11]

Likewise, diol *cis-1*, previously tried as synthetic precursor of diamine *cis-2*, was envisioned as suitable cosubstrate for ADH-mediated bioreductions in a similar way as shown by Hollmann and co-workers with the saturated derivatives.^[8,9]

After a first enzymatic screening, we observed that horse liver ADH (HLADH) and *Thermoanaerobacter* sp. ADH (ADH-T) overexpressed in *E. coli*, were able to accept this diol as hydrogen donor. Then, it was demonstrated that *cis-1* can drive the equilibrium into the reduction mode with higher efficiency than the usual donors such as EtOH (for HLADH) or 2-PrOH (for ADH-T), since by simple addition of equimolar or slight excess of the diol, excellent conversions (and *ee* for **11c**, **21c** and **22c**) into the corresponding alcohols were achieved (Figure 2). The formation of the unsaturated lactone furan-2(5*H*)-one co-product was confirmed by GC analysis (see SI).

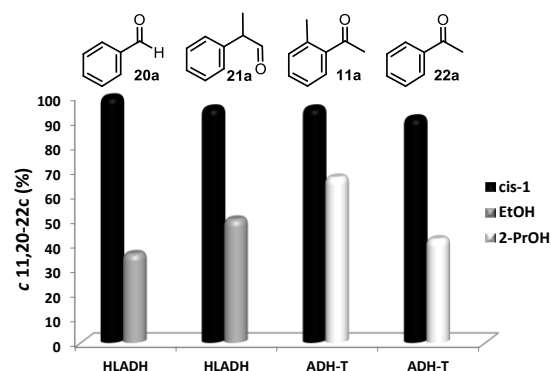


Figure 2. Effect of the hydrogen donor in ADH-catalyzed reactions using 0.5 equiv. (for HLADH) or 3 equiv. (for ADH-T) of *cis-1*, EtOH (HLADH) and 2-PrOH (ADH-T).

Conclusions

Herein we have shown the use of two related compounds, diamine *cis*-2 and diol *cis*-1, in order to drive the equilibrium of TA- and ADH-catalyzed processes by using a 'coupled-substrate' approach. A tautomerization of co-product 5*H*-pyrrole into 1*H*-pyrrole and a lactonization reaction, respectively, are responsible of the excellent conversions attained using a small excess of these cosubstrates. Furthermore, in the case of the diamine a strong coloration of the enzymatic transformation was observed when the reaction proceeded due to the pyrrole polymerization. The excess of both cosubstrates and co-products formed can be easily removed from the products of interest, making these compounds highly appealing for ADH- and TA-catalyzed transformations, enhancing their possible applications from both synthetic and atom economy points of view. Thus, the amount of waste generated due to the amine donor employed, was comparable with current existing transaminase-catalyzed methods to shift the reaction equilibrium towards the desired product, improving the traditional methodology using an excess of isopropylamine.

Experimental Section

Synthesis of *cis/trans*-but-2-ene-1,4-diamine dihydrochloride (*cis/trans*-2)

Diazide intermediates *cis/trans*-5 were afforded from the respective *cis/trans*-4 using a nucleophilic substitution reaction. Dichlorinated compound *cis/trans*-4 (4.75 mmol, 0.5 mL) was added to a stirred solution of NaN₃ (42.7 mmol, 2.77 g) in DMF (7 mL) and the magnetic stirring was continued until disappearance of the starting material (30–45 min). Then, the reaction was quenched by addition of water (10 mL) and extracted with EtOAc (3 x 15 mL). The organic layer was dried with Na₂SO₄, filtered off and concentrated. The residue was purified by flash column chromatography (20% EtOAc/hexane) on silica gel to remove the DMF still remaining after the extraction, leading to the corresponding diazide compounds *cis/trans*-5 as orange oil in quantitative yields.

Desired diamines were prepared as dihydrochloride salts through the reduction of the previous diazides *cis* or *trans*-5 and subsequent acidification. To a solution of *cis/trans*-5 (4.70 mmol, 649 mg) in dry THF (9 mL), a solution of Ph₃P (9.45 mmol, 2.48 g) in dry THF (6 mL) was added. This mixture was stirred at room temperature during the first hour. After this time, the reaction mixture was heated at 50 °C for 16 h. Then, the hydrolysis was carried out by the addition of an aqueous HCl solution 6 M (1 mL), maintaining the reaction at 50 °C during one additional hour. Finally, water (3 mL) and concentrated HCl (500 μL) were added and THF was removed under vacuo. To the obtained residue, water (10 mL) was added, and the aqueous layer was extracted with EtOAc (5 x 10 mL). The water was removed under reduced pressure (50° C), affording a brown crude. The brown crude obtained evaporating the aqueous layer, was recrystallized from a mixture of MeOH-Et₂O (v/v), leading to the desired diamine dihydrochloride *cis*-2 as a white solid (60% yield), with a small amount of the unwished isomer *trans*-2, just observed in the ¹H NMR spectra (ratio *cis/trans*: 95:5) or to diamine *trans*-2 in high purity as a white solid (64% yield).

General procedure for enzymatic transamination reactions using *cis*-2 as amine donor

In a 1.5 mL Eppendorf vial, substrate **6-19a** (5 mM, 12.5 μL from 200 mM stock in DMSO), was dissolved in phosphate buffer (500 μL, 100 mM, pH 7.5) containing PLP (2 mM) and *cis*-2 (7.5 mM, 1.5 equiv. or 15 mM, 3 equiv.). Finally the commercially available transaminase (2 mg) was added. The initial slightly yellow reaction was shaken at 30 °C and 250 rpm for 48 h (observing after this time that the reaction media was completely black with the appearance of a solid at the bottom of the vial), and then stopped by the addition of an aqueous NaOH solution 10 M (250 μL). Then, the mixture was extracted with EtOAc (2 x 0.5 mL), the organic layer was separated by centrifugation (2 min, 13000 rpm) and dried over Na₂SO₄. Conversions were determined by GC and enantiomeric excess by chiral GC or HPLC (see Table 1).

Scaling-up reactions

In an Erlenmeyer flask (100 mL), ketone **7a** or **8a** (25 mM, 0.502 mmol, 100 mg) was dissolved in phosphate buffer (100 mM, pH 7.5) containing PLP (2 mM), MeCN (2.5% v/v) as organic cosolvent and *cis*-2 (37.5 mM, 1.5 equiv.) as amine donor. Finally, ATA-033 (75 mg) was added. Then, the initial slightly yellowish reaction was shaken at 30 °C and 250 rpm for 48 h. After that time, the reaction media was completely black. The conversion was determined by taking a sample (200 μL) of the reaction mixture which was basified with an aqueous NaOH solution 10 M (100 μL) and extracted as shown above, leading to 78% and 89% conversion for **7a** and **8a**, respectively (measured by GC). At this point, the solution was centrifuged at 4,900 rpm for 7 min. The supernatant was decanted, acidified with an aqueous HCl solution 3 M (5 mL) and extracted with Et₂O (3 x 25 mL) discarding the organic layer, in order to remove the small amount of the starting material. Then, the aqueous phase was basified with an aqueous NaOH solution 10 M (8 mL) and extracted with Et₂O (3 x 35 mL). The organic layers were combined, dried over Na₂SO₄ and the solvent was evaporated under reduced pressure providing (*R*)-**7b** (74% yield, >99% *ee*) and (*R*)-**8b** (83% yield, >99% *ee*).

General procedure for alcohol dehydrogenase-catalyzed reductions using *cis*-but-2-ene-1,4-diol (*cis*-1) as cosubstrate

For *E. coli*/HLADH: In a 1.5 mL Eppendorf vial, aldehydes **20a** and **21a** (0.022 mmol, 32 mM) were dissolved in phosphate buffer (700 μL, 50 mM, pH 8), containing NADH (1 mM) and *cis*-1 (0.5 equiv., 16 mM) as cosubstrate. Finally *E. coli*/HLADH (1.5 mg) was added. The reaction was shaken at 30 °C and 250 rpm for 22 h and extracted with EtOAc (2 x 0.5 mL). The organic layer was separated by centrifugation (2 min, 13000 rpm) and dried over Na₂SO₄. Conversions and enantiomeric excess (for **21c**) were determined by GC and HPLC, respectively (Table S4). The presence of furan-2(5*H*)-one in the reaction media was confirmed by GC analysis.

For *E. coli*/ADH-T: In a 1.5 mL Eppendorf vial, the corresponding ketones **11a** and **22a** (0.017 mmol, 34 mM) were dissolved in Tris·HCl buffer (500 μL, 50 mM, pH 7.5), containing NADPH (1 mM) and *cis*-1 (102 mM, 3 equiv.) as cosubstrate. Finally *E. coli*/ADH-T (15 mg) was added. The reaction was shaken at 30 °C and 250 rpm for 24 h and extracted with EtOAc (2 x 0.5 mL). The organic layer was separated by centrifugation (2 min, 13000 rpm) and dried over Na₂SO₄. Conversions and enantiomeric excess were determined by GC analysis (Table S5). The presence of furan-2(5*H*)-one in the reaction media was confirmed by GC analysis.

Acknowledgements

We thank Prof. Martina Pohl (Forschungszentrum Jülich GmbH) and Prof. Wolfgang Kroutil (TU Graz) for the generous donation of HLADH and ADH-T plasmids, respectively. Financial support from MICINN (Project CTQ2013-44153-P) is gratefully acknowledged. L.M.-M. thanks the Principado de Asturias for her predoctoral fellowship Severo Ochoa.

References

- [1] a) J. M. Woodley, *Curr. Opin. Chem. Biol.* **2013**, *17*, 310–316; b) U. T. Bornscheuer, G. W. Huisman, R. J. Kazlauskas, S. Lutz, J. C. Moore, K. Robins, *Nature* **2012**, *485*, 185–194; c) D. Muñoz Solano, P. Hoyos, M. J. Hernáiz, A. R. Alcántara, J. M. Sánchez-Montero, *Bioresour. Technol.* **2012**, *115*, 196–207; d) B. M. Nestl, B. A. Nebel, B. Hauer, *Curr. Opin. Chem. Biol.* **2011**, *15*, 187–193.
- [2] Recent bibliography on transaminases: a) M. Fuchs, J. E. Farnberger, W. Kroutil, *Eur. J. Org. Chem.* **2015**, 6965–6982; b) R. C. Simon, E. Busto, E.-M. Fischereder, C. S. Fuchs, D. Pressnitz, N. Richter, W. Kroutil in *Science of Synthesis, Biocatalysis in Organic Synthesis*, (Eds.: K. Faber, W.-D. Fessner, N. J. Turner), Georg Thieme Verlag, Stuttgart, **2015**, pp. 383–420; c) R. C. Simon, N. Richter, E. Busto, W. Kroutil, *ACS Catal.* **2014**, *4*, 129–143; d) W. Kroutil, E.-M. Fischereder, C. S. Fuchs, H. Lechner, F. G. Mutti, D. Pressnitz, A. Rajagopalan, J. H. Sattler, R. C. Simon, E. Siirola, *Org. Process Res. Dev.* **2013**, *17*, 751–759; e) M. Höhne, U. T. Bornscheuer in *Enzyme Catalysis in Organic Synthesis, 3rd ed.*, (Eds.: K. Drauz, H. Gröger, O. May), Wiley-VCH, Weinheim, **2012**, pp. 779–820; f) M. S. Malik, E.-S. Park, J.-S. Shin, *Appl. Microbiol. Biotechnol.* **2012**, *94*, 1163–1171; g) S. Mathew, H. Yun, *ACS Catal.* **2012**, *2*, 993–1001; h) D. Koszelewski, K. Tauber, K. Faber, W. Kroutil, *Trends Biotechnol.* **2010**, *28*, 324–332; i) H. C. Hailes, P. A. Dalby, G. J. Lye, F. Baganz, M. Micheletti, N. Szita, J. M. Ward, *Curr. Org. Chem.* **2010**, *14*, 1883–1893; j) D. Zhu, L. Hua, *Biotechnol. J.* **2009**, *4*, 1420–1431.
- [3] Recent bibliography on alcohol dehydrogenases: a) T. S. Moody, S. Mix, G. Brown, D. Beecher in *Science of Synthesis, Biocatalysis in Organic Synthesis*, (Eds.: K. Faber, W.-D. Fessner, N. J. Turner), Georg Thieme Verlag, Stuttgart, **2015**, pp. 421–458; b) *Synthetic Methods for Biologically Active Molecules*, (Ed.: E. Brenna), Wiley-VCH, Weinheim, **2014**; c) H. Gröger, W. Hummel, S. Borchert, M. Krauß in *Enzyme Catalysis in Organic Synthesis, 3rd ed.*, (Eds.: K. Drauz, H. Gröger, O. May), Wiley-VCH, Weinheim, **2012**, pp. 1037–1110; d) M. M. Musa, R. S. Phillips, *Catal. Sci. Technol.* **2011**, *1*, 1311–1323; e) E. García-Urdiales, I. Alfonso, V. Gotor, *Chem. Rev.* **2011**, *111*, PR110–PR180; f) M. Hall, A. S. Bommarius, *Chem. Rev.* **2011**, *111*, 4088–4110; g) F. Hollmann, I. W. C. E. Arends, D. Holtmann, *Green Chem.* **2011**, *13*, 2285–2313; h) G. W. Huisman, J. Liang, A. Krebber, *Curr. Opin. Chem. Biol.* **2010**, *14*, 122–129.
- [4] M. Richter, *Nat. Prod. Rep.* **2013**, *30*, 1324–1345.
- [5] a) R. Abu, J. Woodley, *ChemCatChem* **2015**, *7*, 3094–3105; b) E. E. Ferrandi, D. Monti, S. Riva in *Cascade Biocatalysis*, (Eds.: S. Riva, W.-D. Fessner), Wiley-VCH, Weinheim, **2014**, pp. 23–42; c) S. Kara, J. H. Schrittwieser, F. Hollmann, M. B. Ansorge-Schumacher, *Appl. Microb. Biotechnol.* **2014**, *98*, 1517–1529; d) W. Hummel, H. Gröger, *J. Biotechnol.*, **2014**, *191*, 22–31; e) T. Quinto, V. Köhler, T. R. Ward, *Top. Catal.* **2014**, *57*, 321–331; f) H. Wu, C. Tian, X. Song, C. Liu, D. Yang, Z. Jiang, *Green Chem.* **2013**, *15*, 1773–1789; g) C. Rodríguez, I. Lavandera, V. Gotor, *Curr. Org. Chem.* **2012**, *16*, 2525–2541; h) F. Hollmann, I. W. C. E. Arends, K. Buehler, *ChemCatChem* **2010**, *2*, 762–782.
- [6] W. Kroutil, H. Mang, K. Edegger, K. Faber, *Curr. Opin. Chem. Biol.* **2004**, *8*, 120–126.
- [7] K. E. Cassimjee, C. Branneby, V. Abedi, A. Wells, P. Berglund, *Chem. Commun.* **2010**, *46*, 5569–5571.
- [8] a) R. Zuhse, C. Leggewie, F. Hollmann, S. Kara, *Org. Process Res. Dev.* **2015**, *19*, 369–372; b) S. Kara, D. Spickermann, A. Weckbecker, C. Leggewie, I. W. C. E. Arends, F. Hollmann, *ChemCatChem* **2014**, *6*, 973–976; c) S. Kara, D. Spickermann, J. H. Schrittwieser, C. Leggewie, W. J. H. van Berkel, I. W. C. E. Arends, F. Hollmann, *Green Chem.* **2013**, *15*, 330–335.
- [9] A. Bornadel, R. Hatti-Kaul, F. Hollmann, S. Kara, *ChemCatChem* **2015**, *7*, 2442–2445.
- [10] B. Wang, H. Land, P. Berglund, *Chem. Commun.* **2013**, *49*, 161–163.
- [11] A. P. Green, N. J. Turner, E. O. Reilly, *Angew. Chem.* **2014**, *126*, 10890–10893; *Angew. Chem. Int. Ed.* **2014**, *53*, 10714–10717.
- [12] E. Fabiano, B. T. Golding, M. M. Sadeghi, *Synthesis* **1987**, 190–192.
- [13] B. Martin, F. Possémé, C. Le Barbier, F. Carreaux, B. Carboni, N. Seiler, J.-P. Moulinoux, J.-G. Delcros, *Bioorg. Med. Chem.* **2002**, *10*, 2863–2871.
- [14] T. V. Vernitskaya, O. N. Efimov, *Russ. Chem. Rev.* **1997**, *66*, 443–457.
- [15] D. Baud, N. Ladkau, T. S. Moody, J. M. Ward, H. C. Hailes, *Chem. Commun.* **2015**, *51*, 17225–17228.
- [16] D. Könning, W. Hiller, M. Christmann, *Org. Lett.* **2012**, *14*, 5258–5261.
- [17] C. E. Paul, M. Rodríguez-Mata, E. Busto, I. Lavandera, V. Gotor-Fernández, V. Gotor, S. García-Cerrada, J. Mendiola, O. de Frutos, I. Collado, *Org. Process Res. Dev.* **2014**, *18*, 788–792.
- [18] See, for instance: a) D. J., St. Jean, Jr., C. Yuan, E. A. Bercot, R. Cupples, M. Chen, J. Fretland, C. Hale, R. W. Hungate, R. Komorowski, M. Veniant, M. Wang, X. Zhang, C. Fotsch, *J. Med. Chem.* **2007**, *50*, 429–432; b) Y.-J. Wu, H. He, L.-Q. Sun, A. L’Heureux, J. Chen, P. Dextraze, J. E., Starrett, Jr., C. G. Boissard, V. K. Gribkoff, J. Natale, S. I. Dworetzky, *J. Med. Chem.*, **2004**, *47*, 2887–2896; c) F. C. Y. Chan, G. A. Potter, S.

E. Barrie, B. P. Haynes, M. G. Rowlands, J. Houghton, M. Jarman, *J. Med. Chem.* **1996**, *39*, 3319–3323.

[19] It must be noted that this approach is a simplified study just taking into account the waste generated in the stereoselective amination reaction regarding the amine donor employed. To depict a general overview of the atom and cost efficiencies, more accurate calculations such as *E* factor should be performed. For

more information, see: Y. Ni, D. Holtmann, F. Hollmann, *ChemCatChem* **2014**, *6*, 930–943.

[20] EATOS: Environmental Assessment Tool for Organic Syntheses, <http://www.metzger.chemie.uni-oldenburg.de/eatos/english.htm>, accessed: 05.02.2014.

But-2-ene-1,4-diamine and But-2-ene-1,4-diol as Donors for Thermodynamically Favored Transaminase and Alcohol Dehydrogenase-Catalyzed Processes

Adv. Synth. Catal. **Year**, *Volume*, Page – Page

Lía Martínez-Montero, Vicente Gotor, Vicente Gotor-Fernández,* and Iván Lavandera*

